

CONTROLLER



TH113R - CONTROLLER HEAT SYSTEM REGULATOR

Introduction

The TH113R regulator is especially designed to control heating products such as Thermofilm HEATSTRIP, HEATSTAR or underfloor heating products.

The regulator can be used for heating systems up to 3600 watts and operates like a dimmer switch. (A relay can be used to operate larger loads.)

The regulator is also equipped with an ON / STANDBY switch, making it possible to put it in a sleep mode when use is not required.

Operation

The TH113R regulator operates on perpetual 15-minute heating cycles.

For example, if the dial is set halfway, the system will heat for 40% of the cycle; it will be ON for 6 minutes and OFF for 9 minutes.



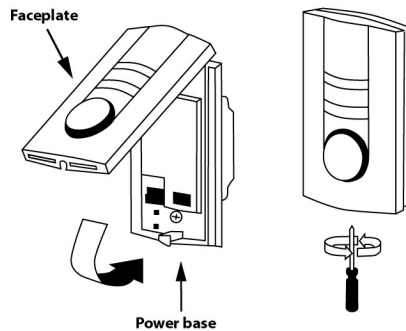
Below is a detailed table of the cycle duration based on the dial's position:

Position and equivalent %	1 0%	2 20%	4 40%	6 60%	8 80%	10 100%
ON	0 min	3 min	6 min	9 min	12 min	15 min
OFF	15 min	12 min	9 min	6 min	3 min	0 min

Installation

Align the bracket tabs on the regulator with the holes located on the power base.

- This regulator must be installed on a PB112 powerbase.
- The screw cannot be removed completely
- Keep the regulator's air vents clean and free from obstructions.



Data Specifications

Model: TH113R
Power setting range: 0 to 100%
Storage: - 20°C to +50°C
Maximum load @ 240V: 3600watts

