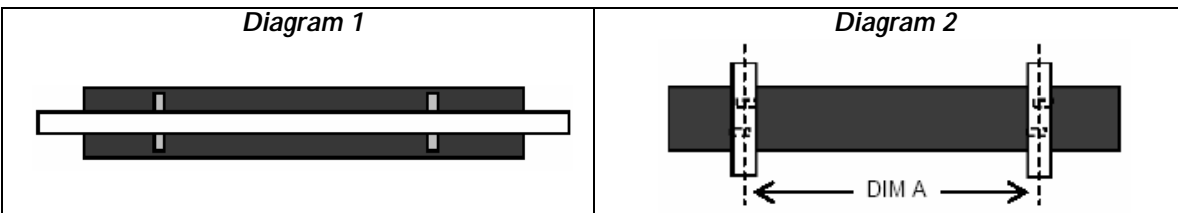
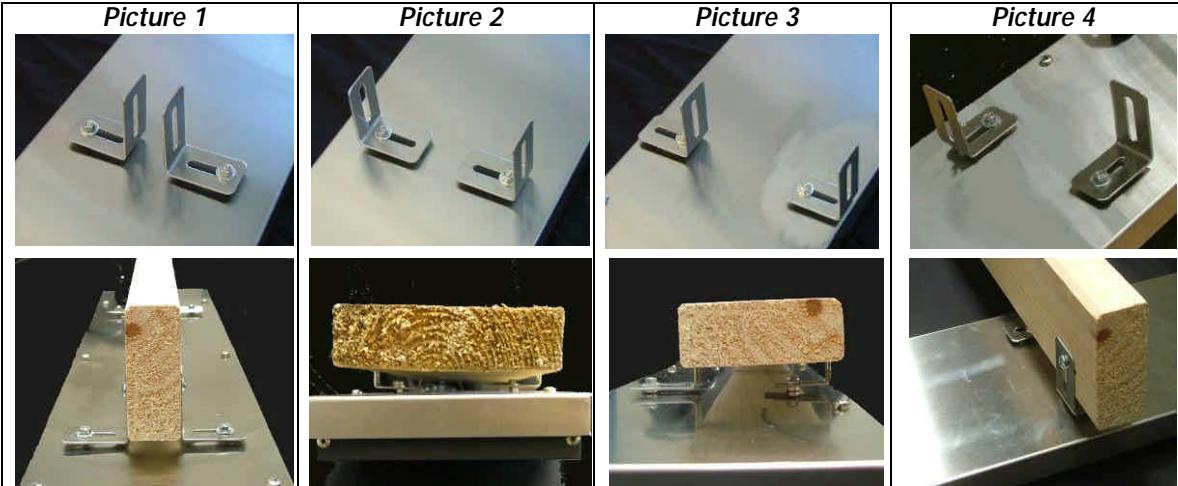


# HEATSTRIP



## THH-PMBSS: MOUNTING BRACKETS

The unique design of these Stainless Steel Mounting Brackets allow secure mounting of the THH Heatstrip models to timber or metal beams and umbrella struts. The pictures and diagrams below show some of the many mounting possibilities utilising the THH-PMBSS mounting brackets.



By adjusting the location of the brackets, mounting to narrow or wide metal or timber beams can be accommodated. (Pictures 1 – 3) Minimum beam width is 25mm (0.98inch) and maximum beam width is 170mm (6.68inch).

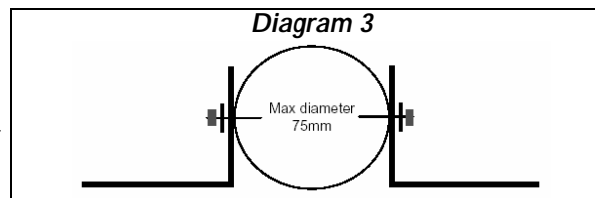
**Note:**

- When mounting to timber beams, allow a minimum of 15mm (0.59inch) between back of heater and timber beams.

The brackets can be adjusted to mount to beams parallel (Diagram 1 & Pictures 1 - 3) or right angles to the heater. (Diagram 2 & Picture 4)

Where beams are at right angles to the heater, the centre of the beams should ideally match the stud centres on the heater. The stud centres for each heater model, represented by DIM A on Diagram 2 are as follows: THH1200 - 450mm (17.73inch), THH1500 - 450mm (17.73inch), THH1800 - 600mm (23.64inch), THH2400 - 800mm (31.52inch), THH3200 - 1,000mm (39.4inch).

To utilise THH-PMBSS brackets with circular beams or umbrella struts / poles, the minimum pole diameter is 25mm (0.98inch) and maximum diameter 75mm (2.95inch). (Diagram 3)



**MOUNTING INSTRUCTIONS**

Fix THH-PMBSS brackets to heater using the nuts provided on the studs at rear of heater.

Lift heater into desired mounting position.

Using suitable fixing screws (not provided), screw bracket onto beam or pole.

If bolts are to be used, mark position of holes on beam or pole, then drill suitable hole before mounting heater with bolts or other fixing devices (not provided).

**Note:**

- Ensure fixing method will adequately support weight of heater, allowing for additional strength on mounting system where high wind can be a factor.
- Ensure all fixings, including nuts securing bracket to heater, are tight and secure.